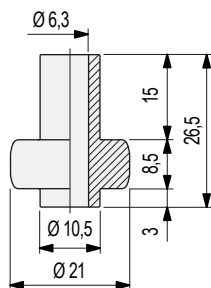
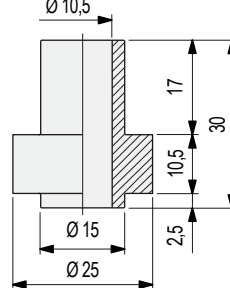


Rollers

Part. S0063



Part. S0095



Part. **S0063**

Part. **S0095**



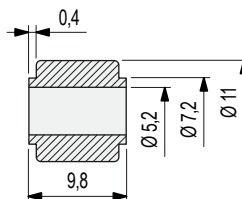
Code

S006351370

S009551380

- Material: acetal POM (white).
- Packaging: Part. S0063 (500 pieces), Part. S0095 (200 pieces).
- Part. S0063 can be used as spare part in roller guides Part. S0128-S0128 S-S0628 S.

Roller



Part. **S0363**

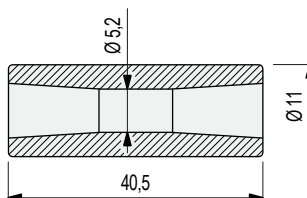


Code

64434

- Material: acetal Rex-LF® (light brown) very low coefficient of friction.
- Packaging: 5000 pieces.

Roller



Part. **S0455**



Code

614381

- Material: acetal Rex-LF® (light brown) very low coefficient of friction.
- Packaging: 500 pieces.

● Best Seller

● Standard

● On request: minimum quantity may apply. Consult our Customer Service for availability.

Item code for order = Part. + Code